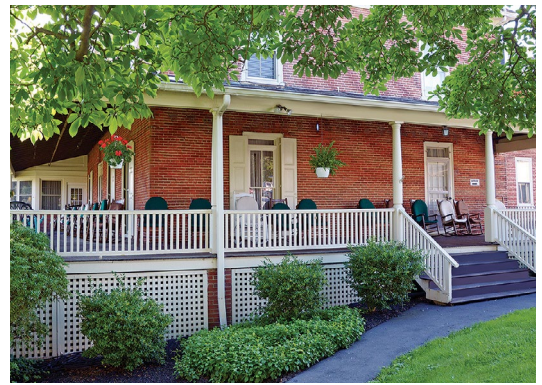


View *from the* Porch



SPRING 2025



*From
my View...*

by
Christine McDonald, Exec. Director

From Tariffs to DOGE:

The Economic Pressures Challenging Friends Home

I've been reflecting on the potential impacts of two recent headline-makers—DOGE and tariffs—on Friends Home and other senior living communities. I'd like to share a few thoughts:

Many of our disposable supplies and medical items are manufactured outside the United States. With new tariffs in place, the costs of these essential items are rising. Even when such items are produced domestically, the prices tend to be higher. This raises a difficult question: Should we, can we, or must we pass these increased costs on to our residents?

Additionally, tariffs are likely to raise the cost of living for our staff. Will we need to adjust wages to help them keep pace with inflation? If we're unable to do so, will they seek employment in other industries with higher compensation?

These challenges may force us to consider raising our rates. However, many of our residents are already living on tight budgets. For those relying on stock market investments—perhaps from the sale of a home to afford moving to Friends Home—returns may be declining amid current market volatility. This further complicates their financial stability.

Similar pressures affect savings accounts, CDs, and even pensions, depending on how they're structured. Many residents also receive financial support from family members, who are likely facing the same economic strain.

Will any residents be forced to leave Friends Home because of these compounding pressures? If so, where will they go?

The impact is not limited to residents. Friends Home relies in part on grants, many of which are funded by foundations that invest heavily in the stock market. As the market trends

Continued on page 2

Back in Bloom: New Garden Beds for Friends Home



Ed cuts the ribbon for our new raised planting beds.

For many years, gardening has been a significant way for the residents of Friends Home to connect with nature and the environment. Many residents have backgrounds in farming or have been part of farming communities, which has fostered a special relationship with the land. Friends Home is located in the heart of a rural and agriculturally active area, surrounded by many small farms and a long history of gardening.

Additionally, Friends Home has adopted the Montessori Lifestyle model, which emphasizes engaging in meaningful activities as a way to slow the aging process. Participating in meaningful activities enhances the quality of life by immersing residents in a visually and intellectually stimulating environment. Gardening—being a truly meaningful activity—plays a vital role in the health and well-being of our residents.

Continued on page 5

From Tariffs to DOGE

(continued from Page 1)

downward, available funding may shrink, and competition for grants will intensify. For example, our new elevator would not have been possible without foundation support.

We're fortunate to have some holdings with Friends Fiduciary, and the modest returns help support our operations and our Resident Assistance Program. But philanthropy is also under strain—recent nonprofit journals predict a drop in individual giving due to the broader economic climate.

Prospective residents, many of whom are “aging in place,” are also affected. For example, DOGE recently defunded Meals on Wheels, a lifeline for many seniors aging at home. Other federally funded services for the elderly may also be reduced or eliminated.

Another concerning trend is the reduction in federal funding for aging-related research. Reports from NIH staff suggest that work on dementia, stroke, and Alzheimer's disease has been scaled back or halted due to layoffs of critical lab and support personnel. This is especially troubling, as cognitive decline is something we see regularly in our community.

At Friends Home, we are actively developing new strategies to navigate these uncertainties. We're doing our best to stay informed amidst the rapid and ongoing changes in the economic and policy landscape.

I welcome your thoughts—please feel free to email me at cmcdonald@fhkennett.org. And as our Quaker tradition says, please “hold us in the light.”



Mushroom Festival Grant

Director of Admissions and Marketing, Christina Johnston (center left) and her fiancé, William Kirwin represented Friends Home at the Mushroom Festival Grant Awards Ceremony on May 6. The Mushroom Festival grant will help with the purchase of two Automated External Defibrillators for Friends Home. Christina and William are pictured with Mushroom Festival Board member Eric Durynski and his wife Karie.

With Apologies: Donors List corrections

We strive for accuracy but regrettably sometimes make errors. Here are a few additions for the donor lists in the Winter issue of View From The Porch.

Elevate! Campaign/All 2024 Donors

Hutton Family HeLP Fund

Peter and Maria Weygandt

2025 Board of Directors

The following is a list of Friends Home's 2025 Board of Directors. A majority of the Board are members of local Quaker meetings.

Karen-Lee Brofee
Angelo Fontanazza
Barbara Harrison (McPherson)
Erin B.P. Miller
Bob Norris
David Park
Regina Reidenberg
Teal Rickerman, Clerk (Board Chair)
Brent Thompson
Alexia Vaughan

Christine McDonald, MHA, NHA, Executive Director

Leadership Team & Key Staff

Main number 610-444-2577

Administration

Christine McDonald, MHA, NHA Ext. 202
Executive Director

Christina Johnston Ext. 217
Admissions and Marketing

Wright Horne Ext. 221
Sr. Advancement Officer, Director of Development

Sandi Singer Ext. 223
Human Resources/Business Office Administrator

Dining Services

Jessica Juarez, AA
Dining Services Director

Independent Living & Personal Care

Michelle Trinidad, PCHA, CALA, CDP
Director of Personal Care

Linden Hall Skilled Nursing

Janet McNemar, BA, MBA, NHA
Nursing Home Administrator

Emily Pagliara, RN, DNS-CT
Director of Nursing

Community Life/Activities & Volunteers

Christina Siciliano
Director of Community Life

Facilities

Mark Stafford
Director of Facilities

Dennis Jones
Building Systems Manager

Friends Home in Kennett is a member of Leading Edge PA and Friends Services Alliance (FSA)

Fresh Faces, Joyful Spaces: A New Chapter in Community Life



Meet the Team!

(L to R:)

Marisol Avalos,
Linden Hall Activities
Coordinator,
Christina Siciliano,
Director of
Community Life,
Pamela Whyte,
Friends Home
Activities Coordinator

After being in flux for a few months, the Community Life Programs at Friends Home and Linden Hall have a new team infusing the program with fresh ideas and creative energy.

New Community Life Director Christina Siciliano's passion for working with seniors stems from her close relationship with her grandmother. "She was my best friend and number one fan," Christina declares. "She believed in me and encouraged me in everything I did. I want to bring joy to the residents like my Grandmom brought to my life."

Christina began working with seniors at Maris Grove Senior Living Community. "When I first went there, I was recovering from a dislocated knee, so I worked in the offices in almost every department. One day, I was in the break room and met a couple of staff members from the activities department. I immediately realized that planning and coordinating activities was where I belonged."

She continues, "I get to spend each day with people I think are part of the greatest generation we've ever had." They are so interested in participating and so appreciative of everything that we do to make each day special."

Before coming to Friends Home, Christina spent two years as Director of Therapeutic Recreation at St. Martha's Manor in Downingtown. There she met Pamela Whyte, a trained hair stylist with a passion for all types of creative arts. Pamela jumped at the chance to join Christina as Activities Coordinator for Friends Home.

"I fell in love with the residents and the atmosphere at Friends Home immediately! I wake up each morning thinking about how to make the activities we are planning extra special. I can't wait to



get to work every morning and spend the day with these wonderful people."

The recent Mother's Day Social is a perfect example of Christina and Pamela's creative partnership at work. Not only did the activity feature a charming tablescape and delicious food, but the whole area where the activity was held was also decorated. It was clear from the resulting photos that all the attendees enjoyed themselves immensely.

The most recent addition to the program is Marisol Avalos, the new activities coordinator for Linden Hall. A resident of Kennett Square, Marisol previously worked at an adult day care center, providing care and activities for people with Parkinson's, Down's Syndrome, and dementia from ages 21 to 98. Marisol's calm demeanor telegraphs a determination to ensure everyone knows they are valued and cared for. She also ensures everyone has the opportunity to participate in activities to the extent that they are interested and able.



"From the first day I walked through the door, I was so warmly welcomed," Marisol recalls. The experience of being here at a nonprofit is quite different from that of working at a for-profit center. Here, the focus is not on the business but on the connection. It really feels like a family," she notes.

In addition to the on-site social, arts, crafts, and music activities, Christina

is reviving the day trips popular with residents. "I am working to reestablish the connections with community organizations like the Y, Longwood Gardens, and the Kennett Flash, as well as revive trips to the Amish market and collaborating with Performing Arts Associate Brenten McGee to arrange outings to music and theater performances."

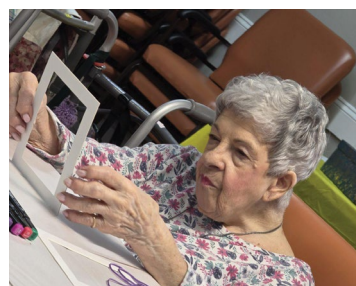
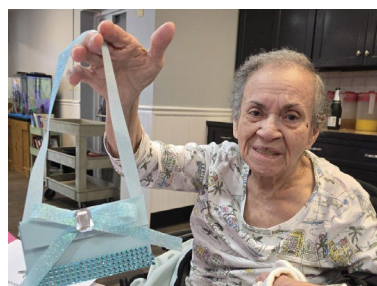
This new team is committed to combining its considerable talents to get as many people as possible involved in this wonderful community. They certainly seem to be off to an excellent start!



Mother's Day Social



What a Party!



Getting Ready to Make a Joyful Noise!

Rehearsals are underway for the spring choir concert
Psalms, Hymns & Spiritual Songs

In addition to selections by the choir and bell choir,
the show will include solos, poetry
and a surprise or two!

Join us - Friday, May 30
3:00 pm
in the Activity Room



Back in Bloom (continued from Page 1)



Moreover, there is a profound significance for our residents in planting, tending to, and watching something grow. It serves as a reminder that life continues.

Unfortunately, when we began construction

on the new elevator tower, we had to demolish an area containing several raised beds where residents grew flowers and vegetables. While we still have smaller raised beds located throughout the campus, this previous area was the main gardening space. Consequently, for several years, while we worked on the elevator, residents had limited access to gardening opportunities, and we lost the positive effects that gardening had on their well-being. We were eager to provide them with new opportunities to garden.

To address this, we identified another area that could be modified for gardening. This new space surrounds a walkway between two of our independent living houses and accommodates four raised beds. There is also ample

space for necessary access paths. Considering the age of our residents, the raised beds include provisions for wheelchair access. Proper access is crucial, so walkways and paths must accommodate mobility aids, whether wheeled or otherwise.

Christina Johnston, our Admissions and Marketing Coordinator, became excited about the project and found a contractor to complete the work on a tight schedule and at minimal cost. She also gathered volunteers to help fill the new raised beds and arranged for seedlings to ensure we wouldn't miss the growing season. Many thanks to Christina for her efforts!

We anticipate that many items grown in the raised beds will be used in vases throughout the Friends Home campus, and hopefully some vegetables will be served in the dining halls as well.

The gardens will be maintained by the community as a whole, providing an opportunity for participants to socialize and collaborate while caring for the garden. This allows residents to enjoy the outdoors together, rediscover an old hobby, or even introduce a new one.



Upper left: Shout out to Junior Villagomez and New London Construction for materials and construction of our beautiful planting boxes.

Top of page and upper right: Many thanks to our wonderful cadre of volunteers for preparing our new boxes for planting.

Left and bottom photos: Our resident planters! The happy results of this community effort will appear in our dining rooms as we go from growing to harvesting.



All Around Friends Home & Linden Hall



Brenten McGee introduced the residents to pianist Rachel Lee Anemone who gave a mini-concert of classical piano selections by famous composers. Rachel and Brenten studied music together at West Chester University.



Friends Home was well represented by Klaus and Lisa at the annual Trout Rodeo at Anson B. Nixon Park.



Our residents decorated flower pots and made cards to thank our Linden Hall nurses for the loving care they provide each day. A big thank you to Zena Florist in Kennett Square for supplying the beautiful flowers!

Activities Coordinator Pamela Whyte loves to provide pampering manicures and hand massages.



Signs of Spring: Mary Ann and the Easter Bunny enjoy watching the Egg Hunt from the porch. Friends happily sunning in the courtyard.



Guen Calabrese of Calabrese Arts joined the residents for Coffee Talk.



Planned Giving: A Legacy of Love and Security

Have you ever considered how your legacy could make a lasting difference?

By including Friends Home in Kennett Square in your estate plans, you help ensure that future generations of older adults continue to receive the compassionate, person-centered care that makes our community so special. Planned gifts—whether through a will, trust, or charitable annuity—provide long-term support that helps us maintain and grow the loving, Quaker-guided environment we all value.

What is Planned Giving? Does this have any relevance for me?

Absolutely. Planned giving is a way for anyone—not just the wealthy—to make a meaningful, lasting contribution to the future of Friends Home in Kennett Square. In fact, most people have the capacity to create a planned gift, often with little or no impact on their current income.

Whether through a will, a charitable gift annuity, or a trust, these types of gifts help create a strong financial foundation for the Home and ensure that our mission of compassionate, Quaker-guided care continues for generations to come. Some planned gifts can even provide you with added income or tax benefits during your lifetime.

How Will My Planned Gift Be Used?

Most planned gifts to Friends Home are invested with our trusted financial partner, Friends Fiduciary. The income from those investments supports:

- Day-to-day operations of the Home
- The Resident Assistance Program, which provides financial support

to residents who may be running low on personal funds, helping them stay longer in the community they love

- Essential maintenance and infrastructure projects not covered by grants

Your legacy gift becomes part of something larger: a living commitment to care, stability, and community.

Interested in learning more?

We invite you to explore how you can make a difference through planned giving. Please contact Wright Horne, Senior Advancement Officer at whorne@fhkennett.org, or (609) 774-3049 for a confidential conversation.

COMPARISON OF SOME PLANNED GIVING INSTRUMENTS

	Bequest	Charitable Gift Annuity	Charitable Remainder Trust	Charitable Lead Trust	Charitable Legacy Fund	Donor Advised Fund
		Beneficiaries				
Benefit to Donors	Estate Tax Deduction	Deduction for charitable gift Reduced capital gains & estate tax	Deduction for value of charitable gift remainder Reduced capital gains & estate tax	Tax deduction for the annual contributions to the charitable organization	Tax deduction for full amount of gift when made	Tax deduction for full amount of gift when made
Charitable Beneficiaries	Named in will or codicil Donor may modify during lifetime	Donor designates charitable organization(s) to receive residuum	Donor designates charitable organization(s) to receive remainder interest	Named by donor Receive income distributions for the term of the trust	Endowment established to benefit charitable organization designated by donor	Donor names remainder beneficiary and has input into grant recipients
Lifetime Payments	No	Yes	Yes	No	No	No
Complexity of Vehicle	Simple	Simple	More complex	Complex	Simple	Simple

This chart is provided by Friends Fiduciary, Philadelphia, Pennsylvania. Friends Fiduciary manages the Friends Home Endowment, a fund established for long-term support of Friends Home. Friends Fiduciary also serves as advisors to donors who wish to make a planned or legacy gift to Friends Home.



147 West State Street
Kennett Square, PA 19348
(610) 444-2577
www.fhkennett.org

return service requested

NONPROFIT ORG

US POSTAGE
PAID
LANCASTER, PA
PERMIT #299

Come Take a Tour We'd love to show you around!

If you would like to tour Friends Home, contact our Marketing and Admissions Director, Christina Johnston, at 610-444-2577 ext. 217 – Office – or 484-746-0418 – Cell, or by email at cjohnston@fhkennett.org.

The latest protocols on visiting can be found on our website: www.fhkennett.org

And to experience what our lifestyle is like, we recommend our famous “Give it a Try” stay. No commitment, every amenity.

Also, be sure to check us out on social media:
Facebook - www.facebook.com/FriendsHomeinKennett
Instagram - www.instagram.com/friendshomekennett/



PRIZES NEEDED!

Our weekly Bingo games are very popular and residents love having a variety of prizes to choose from. Donations of the following are cheerfully welcome. Drop off at the Reception Area or at the Health Center.

- ★ Pens
- ★ Stationery
- ★ Post-It-Notes
- ★ Socks
- ★ Costume Jewelry
- ★ Word Search Books
- ★ Tote Bags
- ★ Small Plants
- ★ Back Scratchers
- ★ Flashlights
- ★ Cups/Tumblers
- ★ Knick Knacks
- ★ Loofahs/Bath Sponges

- ★ Adult Coloring Books/Colored Pencils
- ★ Crackers (individually packaged)
- ★ Chips/Snacks/Popcorn (small snack size)
- ★ Toiletries such as toothpaste, body soap, shampoo/conditioner, hand soap, toothbrushes, etc.
- ★ Lip balm, hand cream, or body lotion (*all must NOT have the word **medicated** on packaging*)
- ★ Gloves/Scarves/Hats/Ear Warmers